



## 72A Main Street

Beeford, Driffield, YO25 8AZ

Price guide £149,950

Welcome to Main Street, Beeford.

We are pleased to bring to market this vacant, mid terraced, two bed property. Located on Main Street, Beeford this property is ideal for a first time buyer or investor. Perfectly situated with easy access towards Bridlington, Beverley and close to local amenities including a school, this property offers a large open plan living space, modern kitchen, downstairs bathroom and two nice sized bedrooms up stairs. The property has on street parking and a private garden to the rear.

We believe this property is perfect for a first time buyer looking to get on to the property ladder and to add a touch of their own.

Early viewing is advised.

### Viewing

Please contact our Denton Estate Agents Office on 01262 410820 if you wish to arrange a viewing appointment for this property or require further information.

- Vacant Possession
- Ideal First Time Buyer Property
- Easy access to Bridlington and Beverley
- Quiet Sought After Location
- Close To Local Amenities Including School



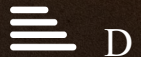
2



1



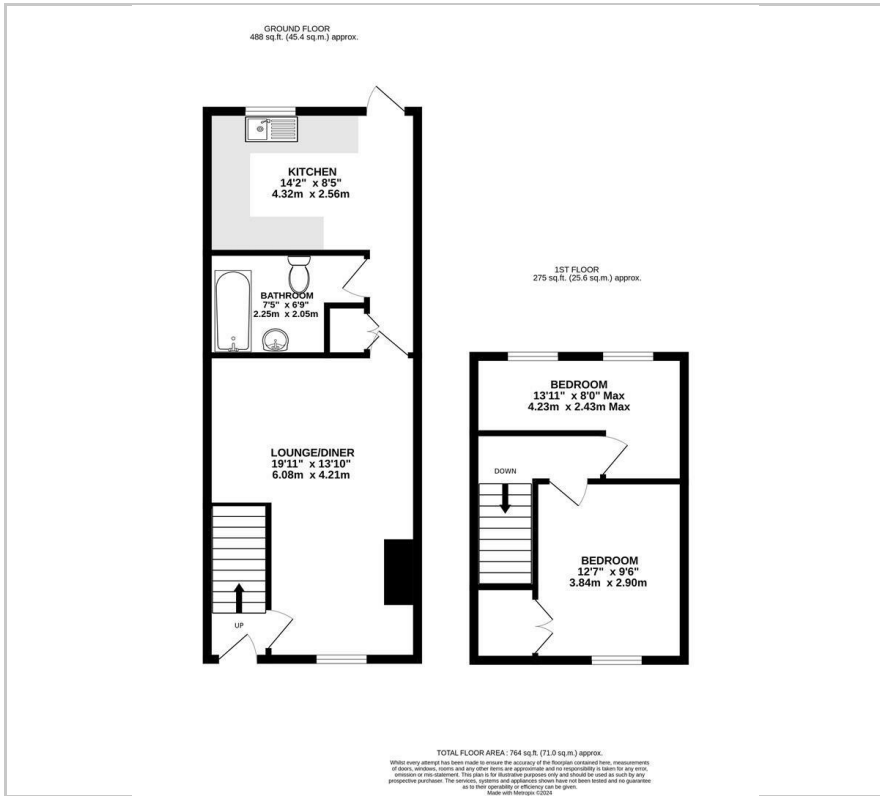
1



D



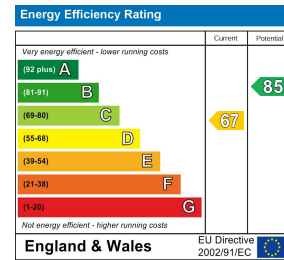
## Floor Plan



## Area Map



## Energy Efficiency Graph



These particulars, whilst believed to be accurate are set out as a general outline only for guidance and do not constitute any part of an offer or contract. Intending purchasers should not rely on them as statements of representation of fact, but must satisfy themselves by inspection or otherwise as to their accuracy. No person in this firm's employment has the authority to make or give any representation or warranty in respect of the property.